

SCALES &
ARPEGGIOS
FOR TROMBONE

Compiled

BOB DOWELL


MAJOR SCALE

♩=60 -120 | To be played legato & staccato

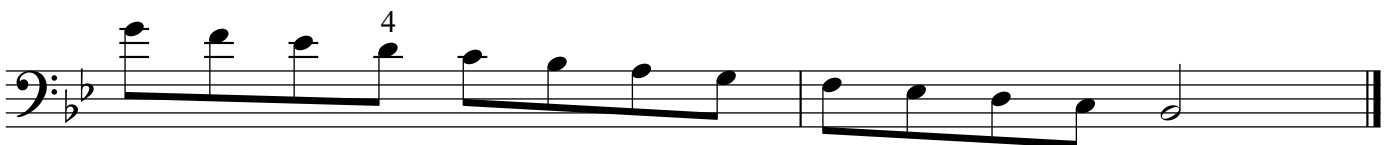
C MAJOR



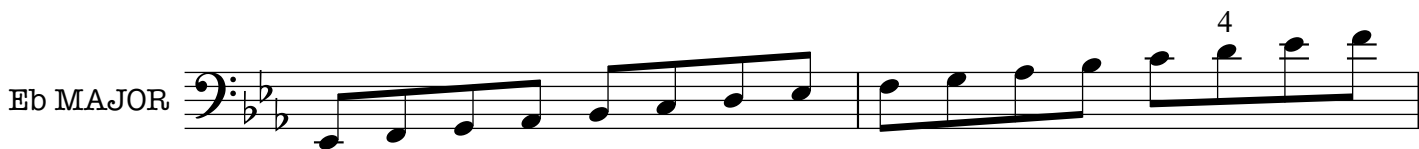
F MAJOR



Bb MAJOR



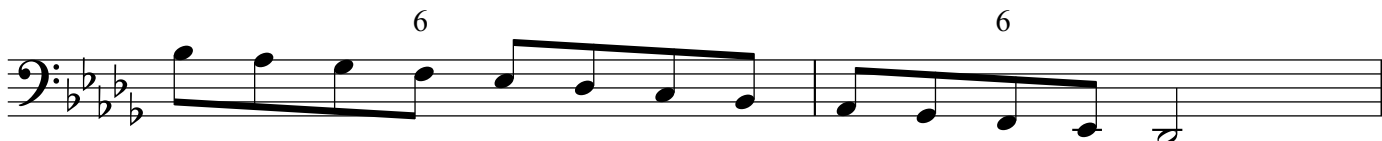
Eb MAJOR



Ab MAJOR



Db MAJOR



Gb MAJOR

7 6 5 4

5 6 7

B MAJOR

7 5

5 7

E MAJOR

7

7

A MAJOR



D MAJOR



G MAJOR



HARMONIC MINOR SCALE

A MINOR HARMONIC



D MINOR HARMONIC



G MINOR HARMONIC



C MINOR HARMONIC

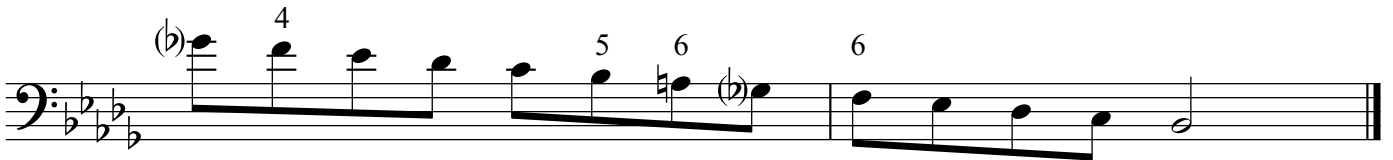


F MINOR HARMONIC





Bb MINOR HARMONIC



Eb MINOR HARMONIC



G# MINOR HARMONIC

Musical notation for the first line of the G# minor harmonic scale. The key signature has three sharps (F#, C#, G#). The scale starts on G# and moves up. Fingerings are indicated: 4 for the second measure, 5 for the third measure, and 2 for the fourth measure. A double sharp (F##) is used for the second measure. The text "F Double Sharp!" is written below the staff.

Musical notation for the second line of the G# minor harmonic scale. The scale continues from the first line. Fingerings are indicated: 5 for the second measure. A double sharp (F##) is used for the second measure. The line ends with a double bar line.

C# MINOR HARMONIC

Musical notation for the first line of the C# minor harmonic scale. The key signature has four sharps (F#, C#, G#, C#). The scale starts on C# and moves up. A fingering of 6 is indicated for the second measure. A double sharp (F##) is used for the second measure.

Musical notation for the second line of the C# minor harmonic scale. The scale continues from the first line. A fingering of 6 is indicated for the second measure. A double sharp (F##) is used for the second measure. The line ends with a double bar line.

F# MINOR HARMONIC

Musical notation for the first line of the F# minor harmonic scale. The key signature has three sharps (F#, C#, G#). The scale starts on F# and moves up. Fingerings are indicated: 6 for the second measure, 5 for the third measure, 4 for the fourth measure, 4 for the fifth measure, 3 for the sixth measure, and 4 for the seventh measure. A double sharp (F##) is used for the second measure.

A musical staff in bass clef with a key signature of two sharps (F# and C#). The notes are: G2 (fingering 4), A2 (fingering 5), B2, C3, D3, E3, F#3 (fingering 6), G3 (fingering 4), A3, B3, C4, D4, E4, F#4, G4. The staff ends with a double bar line.

B MINOR HARMONIC

A musical staff in bass clef with a key signature of two sharps (F# and C#). The notes are: G2 (fingering 7), A2, B2, C3, D3, E3, F#3 (fingering 5), G3 (fingering 4), A3, B3, C4, D4, E4, F#4, G4. The staff ends with a double bar line.

A musical staff in bass clef with a key signature of two sharps (F# and C#). The notes are: G2 (fingering 4), A2, B2, C3, D3, E3, F#3 (fingering 5), G3 (fingering 4), A3, B3, C4, D4, E4, F#4, G4. The staff ends with a double bar line.

E MINOR HARMONIC

A musical staff in bass clef with a key signature of one sharp (F#). The notes are: G2 (fingering 7), A2, B2, C3, D3, E3, F#3 (fingering 5), G3 (fingering 4), A3, B3, C4, D4, E4, F#4, G4. The staff ends with a double bar line.

A musical staff in bass clef with a key signature of one sharp (F#). The notes are: G2 (fingering 7), A2, B2, C3, D3, E3, F#3 (fingering 5), G3 (fingering 4), A3, B3, C4, D4, E4, F#4, G4. The staff ends with a double bar line.

MELODIC MINOR SCALE

A MINOR MELODIC

Musical notation for the A minor melodic scale in bass clef. The scale is written in two lines. The first line shows the ascending scale: A2, B2, C3, D3, E3, F3, G3, A3 (with a sharp sign above it), B3, C4, D4, E4, F4, G4. The second line shows the descending scale: G4, F4, E4, D4, C4, B3 (with a flat sign above it), A3, G3, F3, E3, D3, C3, B2, A2. The piece concludes with a double bar line.

D MINOR MELODIC

Musical notation for the D minor melodic scale in bass clef. The scale is written in two lines. The first line shows the ascending scale: D2, E2, F2, G2, A2, B2, C3, D3 (with a sharp sign above it), E3, F3, G3, A3, B3, C4. The second line shows the descending scale: C4, B3, A3, G3, F3, E3, D3 (with a flat sign above it), C3, B2, A2, G2, F2, E2, D2. The piece concludes with a double bar line.

G MINOR MELODIC

Musical notation for the G minor melodic scale in bass clef. The scale is written in two lines. The first line shows the ascending scale: G2, A2, B2, C3, D3, E3, F3, G3 (with a sharp sign above it), A3, B3, C4, D4, E4, F4, G4. The second line shows the descending scale: F4, E4, D4, C4, B3, A3 (with a flat sign above it), G3, F3, E3, D3, C3, B2, A2, G2. The piece concludes with a double bar line.

C MINOR MELODIC

First line of musical notation for C minor melodic scale. It begins with a bass clef and a key signature of two flats (B-flat and E-flat). The scale starts on C4 and ascends through C4, D4, E-flat4, F4, G4, A4, B-flat4, and C5. The final note, C5, is marked with a '4' above it, indicating a fourth finger fingering.

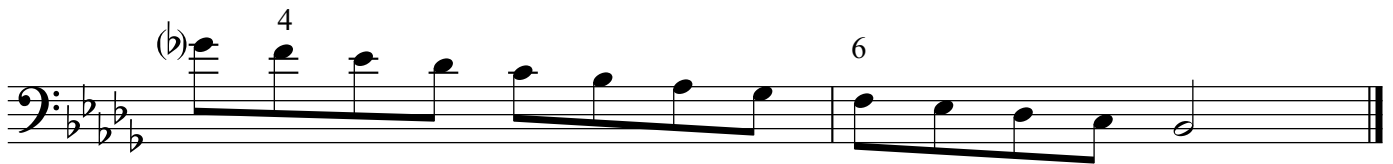
Second line of musical notation for C minor melodic scale. It continues from the first line, starting with a C5 quarter note followed by a descending eighth-note scale: B-flat4, A4, G4, F4, E-flat4, D4, C4. The piece concludes with a double bar line.

F MINOR MELODIC

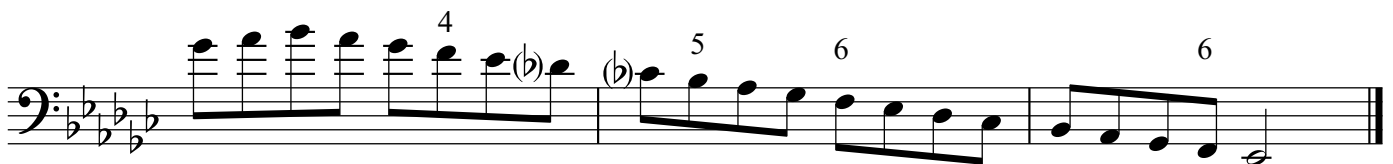
First line of musical notation for F minor melodic scale. It begins with a bass clef and a key signature of three flats (B-flat, E-flat, and A-flat). The scale starts on F4 and ascends through F4, G4, A-flat4, B-flat4, C5, D5, E-flat5, and F5.

Second line of musical notation for F minor melodic scale. It continues from the first line, starting with a F5 quarter note followed by a descending eighth-note scale: E-flat5, D5, C5, B-flat4, A-flat4, G4, F4. The piece concludes with a double bar line.

Bb MINOR MELODIC



Eb MINOR MELODIC



Ab MINOR MELODIC



B MINOR MELODIC

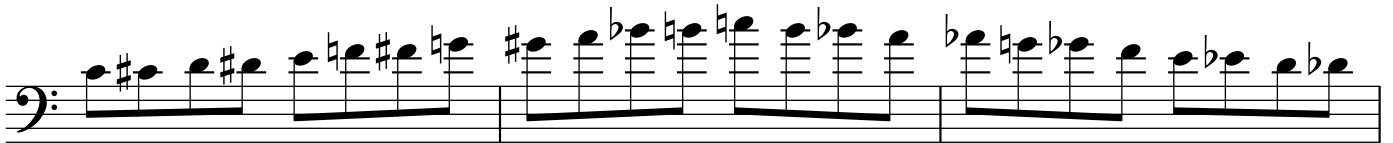


E MINOR MELODIC



CHROMATIC SCALE

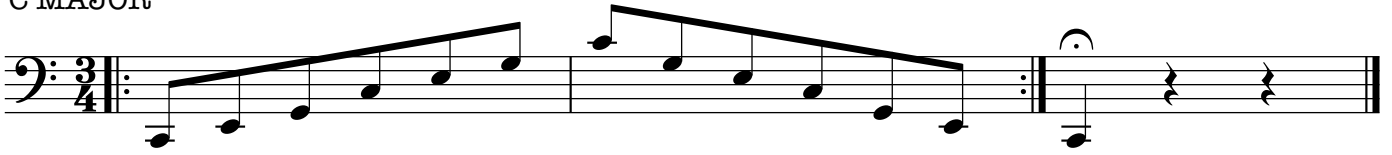
THREE OCTAVES



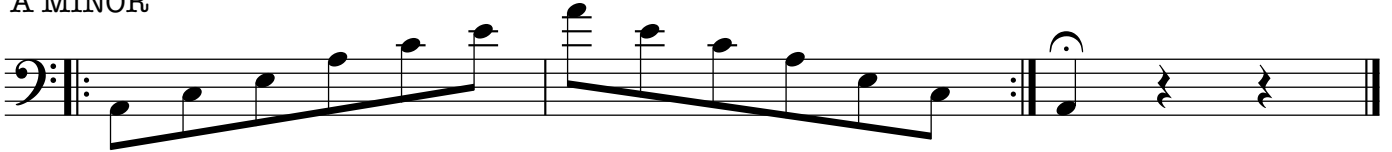
ARPEGGIOS

TWO OCTAVES

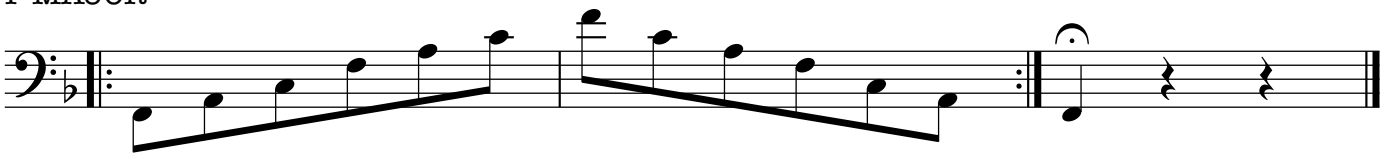
C MAJOR



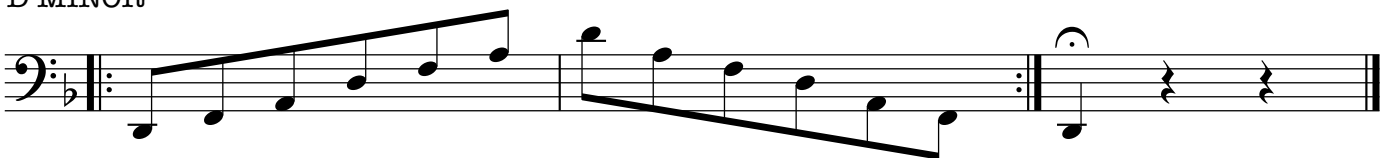
A MINOR



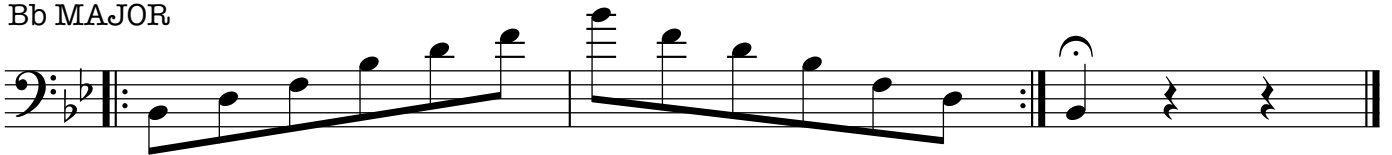
F MAJOR



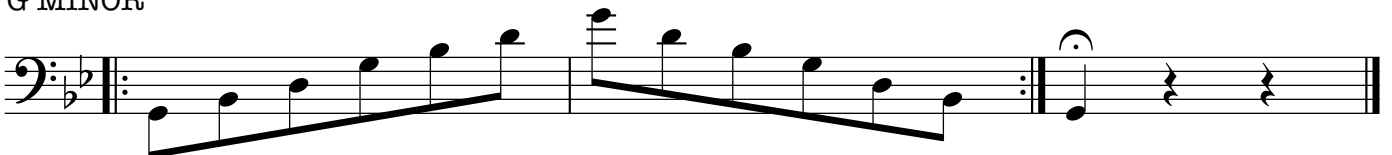
D MINOR



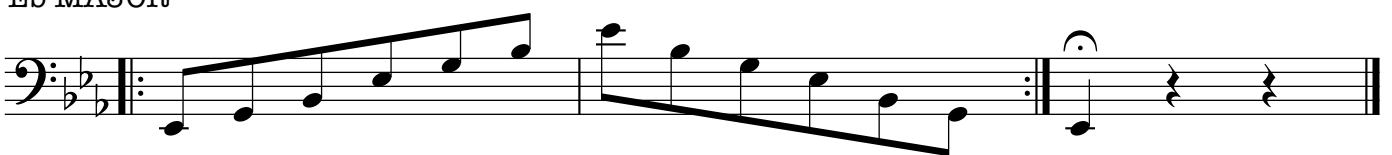
Bb MAJOR



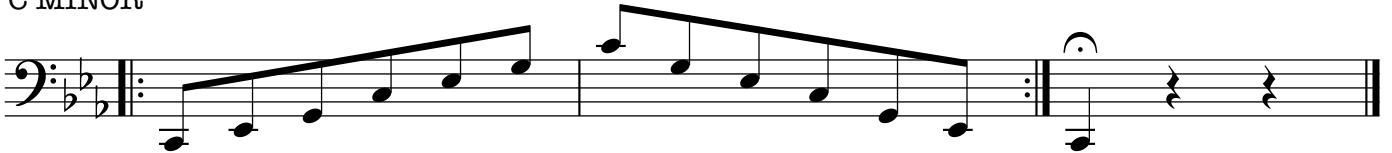
G MINOR



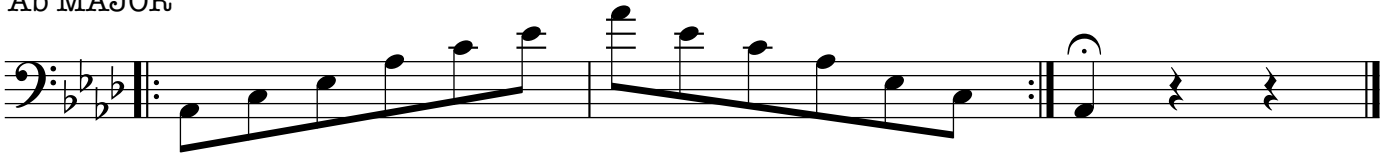
Eb MAJOR



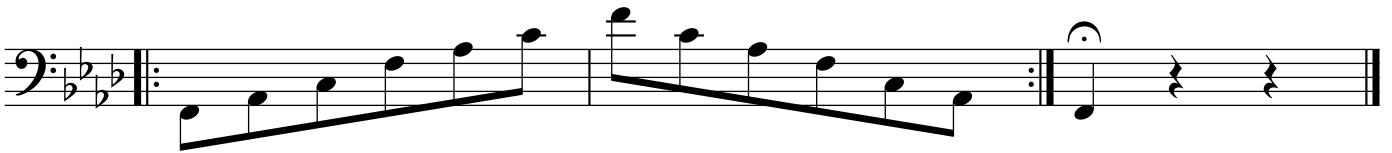
C MINOR



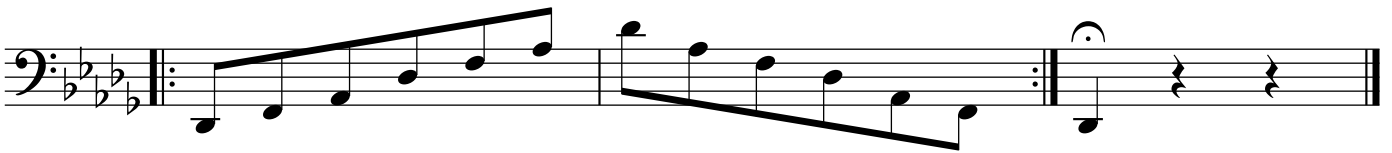
Ab MAJOR



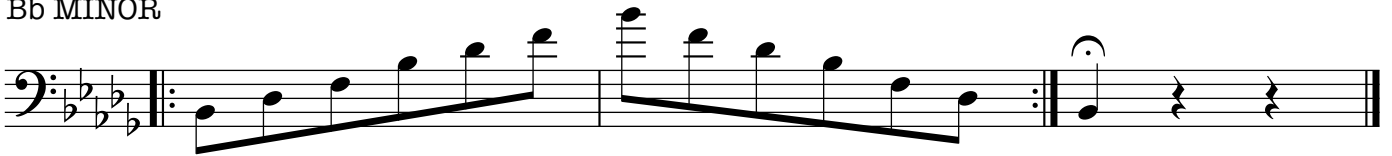
F MINOR



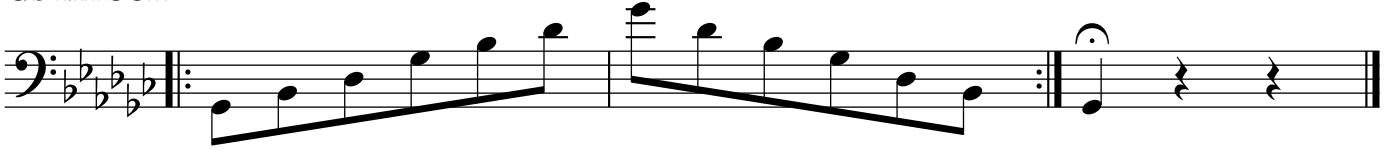
Db MAJOR



Bb MINOR



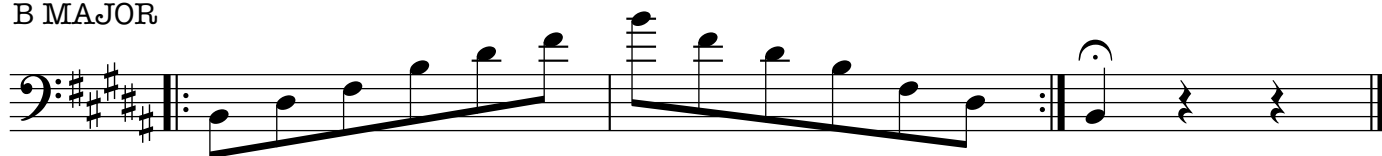
Gb MAJOR



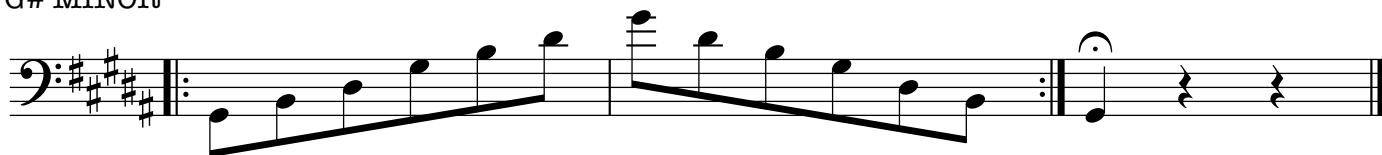
Eb MINOR



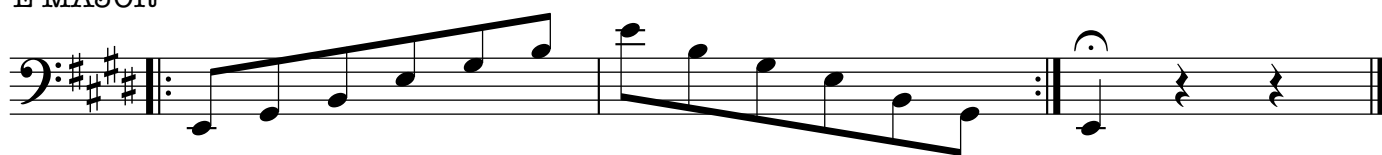
B MAJOR



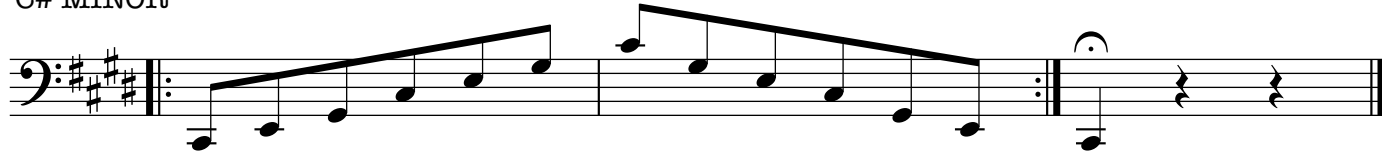
G# MINOR



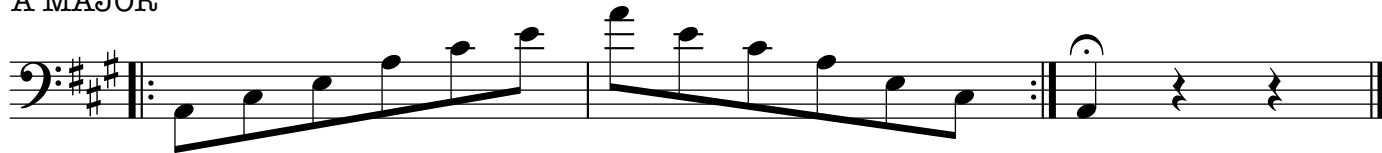
E MAJOR



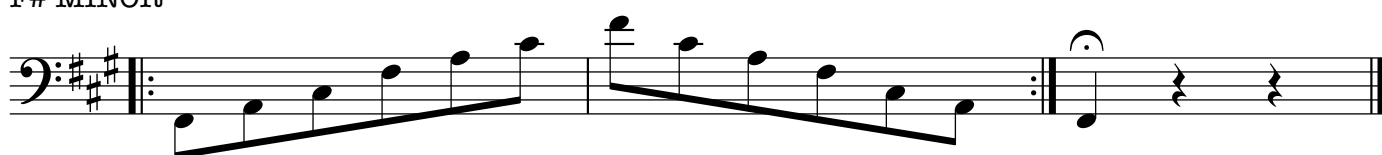
C# MINOR



A MAJOR



F# MINOR



D MAJOR

Musical notation for the D Major scale in bass clef. The scale is written in two parts: an ascending line and a descending line. The ascending line starts on D2 and goes up to D3. The descending line starts on D3 and goes down to D2. The piece concludes with a double bar line, a repeat sign, and a final D2 note with a fermata.

B MINOR

Musical notation for the B Minor scale in bass clef. The scale is written in two parts: an ascending line and a descending line. The ascending line starts on B2 and goes up to B3. The descending line starts on B3 and goes down to B2. The piece concludes with a double bar line, a repeat sign, and a final B2 note with a fermata.

G MAJOR

Musical notation for the G Major scale in bass clef. The scale is written in two parts: an ascending line and a descending line. The ascending line starts on G2 and goes up to G3. The descending line starts on G3 and goes down to G2. The piece concludes with a double bar line, a repeat sign, and a final G2 note with a fermata.

E MINOR

Musical notation for the E Minor scale in bass clef. The scale is written in two parts: an ascending line and a descending line. The ascending line starts on E2 and goes up to E3. The descending line starts on E3 and goes down to E2. The piece concludes with a double bar line, a repeat sign, and a final E2 note with a fermata.